



**IFMA**<sup>TM</sup> **Switzerland  
Chapter**  
International Facility Management Association

LIGHT

SPOT

## **Optimising FM using BIM International project examples**

Reid Cunningham  
BAM FM Ltd.  
Strategic Development Director

# Agenda

1. Introduction
2. «Push and Pull» factors for BIM in the UK
3. Project Robin · Method
4. Project Robin · Demonstration
5. «Retro-BIM»
6. «BIM for FM» · Business Case / ROI
7. BAM's «BIM for FM» Future
8. «BIM für FM» → Benefits and Challenges

# Introduction - Reid Cunningham



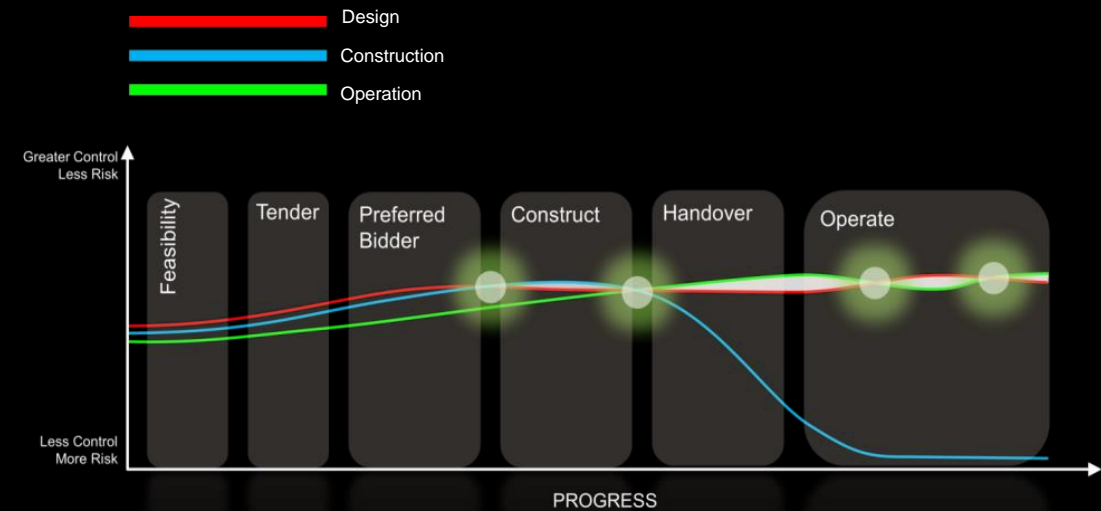
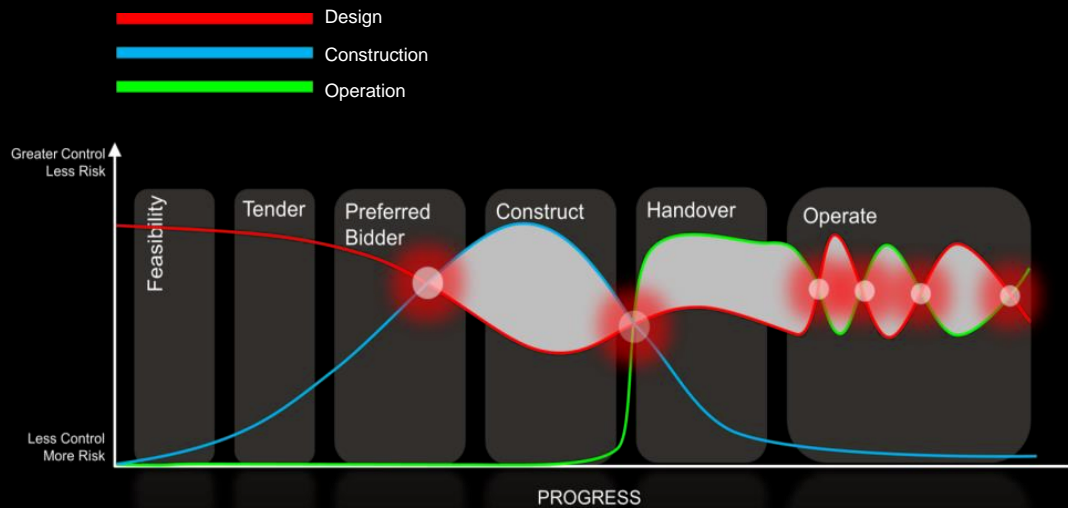
## BAM FM

- 60% turnover in PFI
  - Public sector health, education, law & order, public sector accommodation
  - Long term (25 to 30 years)
  - Performance / Availability
  - Fixed price
- 40% turnover in maintenance
  - Commercial sector
  - Static & mobile engineers/technicians

# Introduction - What is BIM?

## Building Information Management – (BIM)

- 3D graphical model
- Verified asset data



# Introduction - Headlines

- Clients
- Contractors

**45%**

Improvement in like for like service quality in four months

**54%**

Improvement in PPM completion per month

**Building**

AWARDS 2014

**FINALIST**

BIM INITIATIVE OF THE YEAR

**25min**

Average time saved per job using hand held devices and BIM

2014 Technology in FM Award Winner



New BIM for FM ROI within 2 Years

# “Push and Pull” factors for BIM in the UK

## Influence of UK Government initiatives

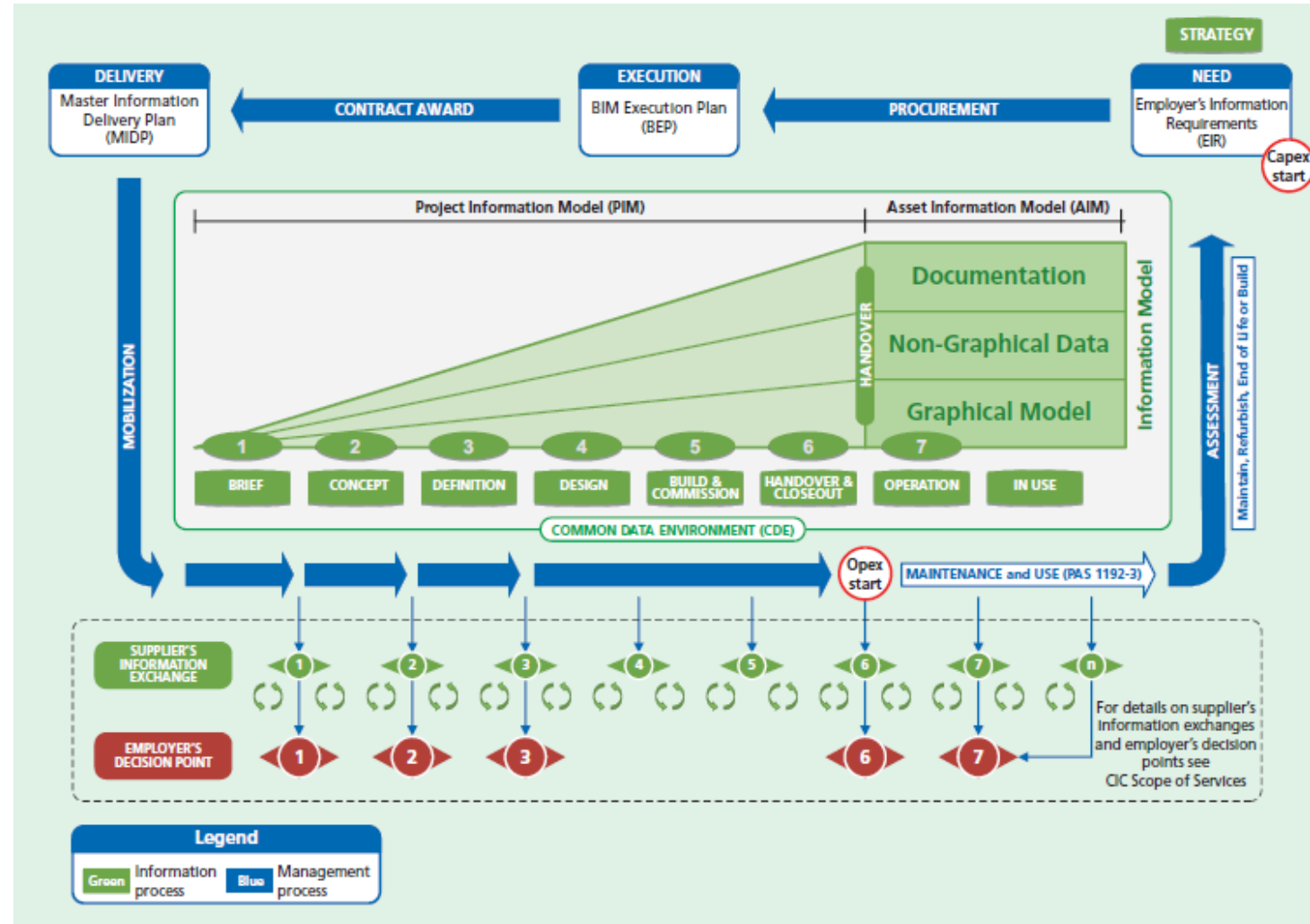
- PAS 1192:Part 2 and 3
- Government Soft Landings (GSL)
- BIM Task Group



# “Push and Pull” factors for BIM in the UK

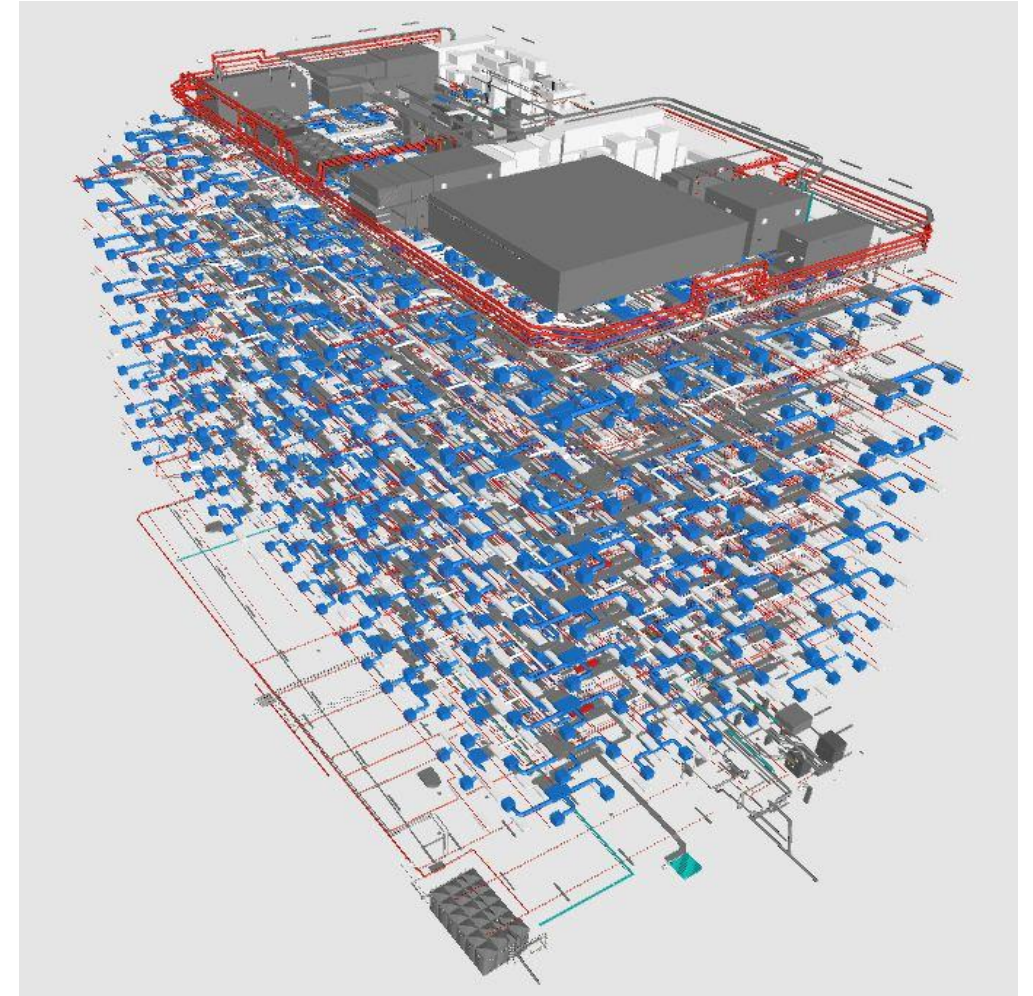
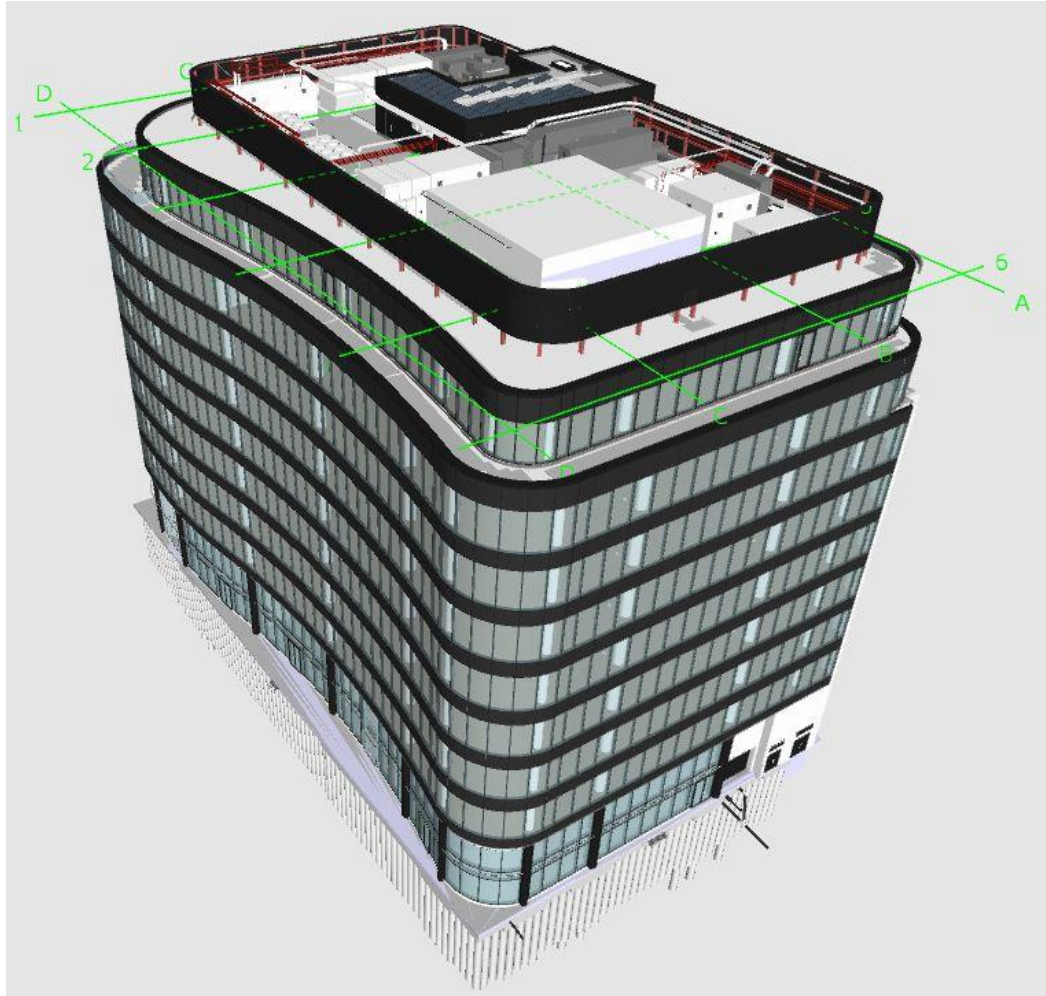
## Government Soft Landings (GSL)

- Design (stages 1, 2, 3 and 4)
- Construction & Handover (stages 5 and 6)
- Operation (stage 7 .....



# “Push and Pull” factors for BIM in the UK

## Commercial and Property Sector Interest





# UK FM Context

SPOT LIGHT



# Project Robin - Method

## Phase 1: Proof of Concept

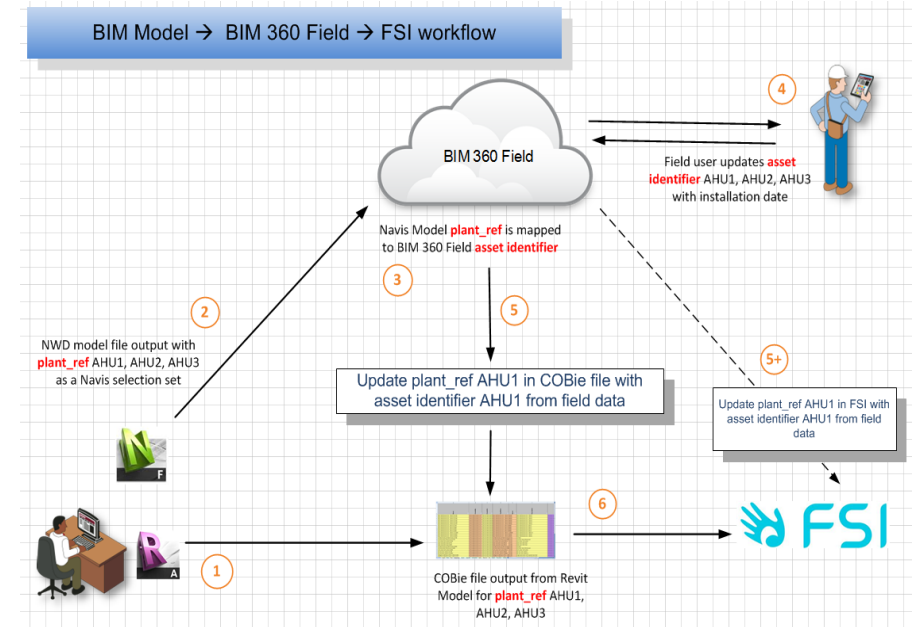
- Populate CAFM with BIM Data Assets
- COBie Transfer to FSI CAFM System



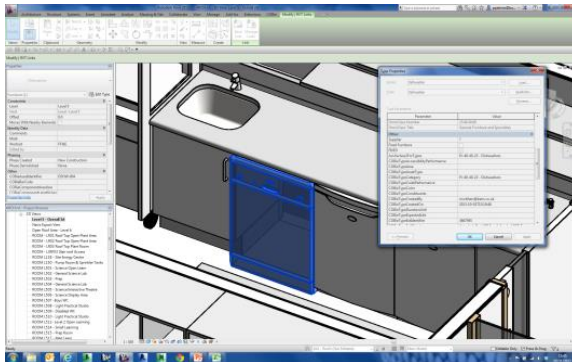
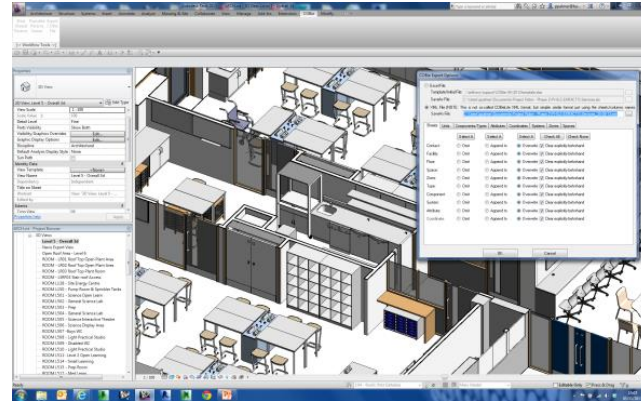
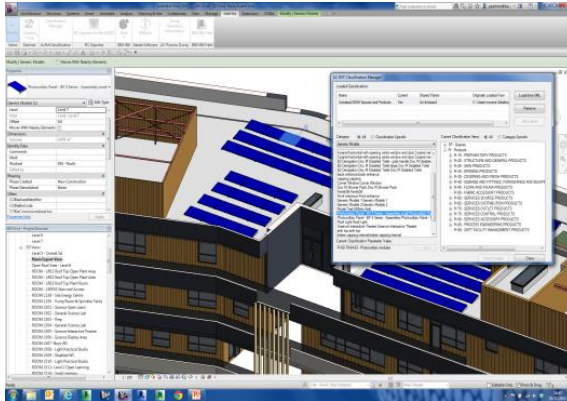
Name	EntitySystem	EntityType	EntityIdentifier	SmartNumber	InstallationDate	WarrantyStartDate	FlagNumber	BarCode	AssetIdentifier	Length	Area
733 VAV Unit - Trox TVJD-TVTD - Attenuator/VAV Unit - Trox TVJD - Autodesk Revit 2013 - 20130531 - Autodesk Revit DB Far			1317941	n/a	n/a	n/a	n/a	U-VAV-S	n/a	1.0704	
732 VAV Unit - Trox TVJD-TVTD - Attenuator/VAV Unit - Trox TVJD - Autodesk Revit 2013 - 20130531 - Autodesk Revit DB Far			1319677	n/a	n/a	n/a	n/a	U-VAV-S	n/a	0.8526	
731 VAV Unit - Trox TVJD-TVTD - Attenuator/VAV Unit - Trox TVJD - Autodesk Revit 2013 - 20130531 - Autodesk Revit DB Far			1311181	n/a	n/a	n/a	n/a	U-VAV-S	n/a	1.0704	
734 VAV Unit - Trox TVJD-TVTD - Attenuator/VAV Unit - Trox TVJD - Autodesk Revit 2013 - 20130531 - Autodesk Revit DB Far			1322346	n/a	n/a	n/a	n/a	U-VAV-S	n/a	1.0704	

## Phase 2: Operational Stage

- Populate CAFM with BIM data for UCL Academy Camden
- Operate Live 3D BIM using 360 Field
- Operational synchronization between BIM and CAFM



# Project Robin - Method



- Objects Classified to Uniclass2 via Autodesk toolkit for Classifications and COBie Exports to xls and xml formats
- End User Navigation in 360Field Provision of views from BIM set-up to aide navigation. Rooms and major areas.
- Unique\_ID assigned to Asset Required for FM System within Database.  
(The primary Key to linking)
- PPM Regimes automatically created from Uniclass2 classifications of data transported to FSI System
- BAM Data Specification - (Beyond COBie) Further enhanced data to assets.

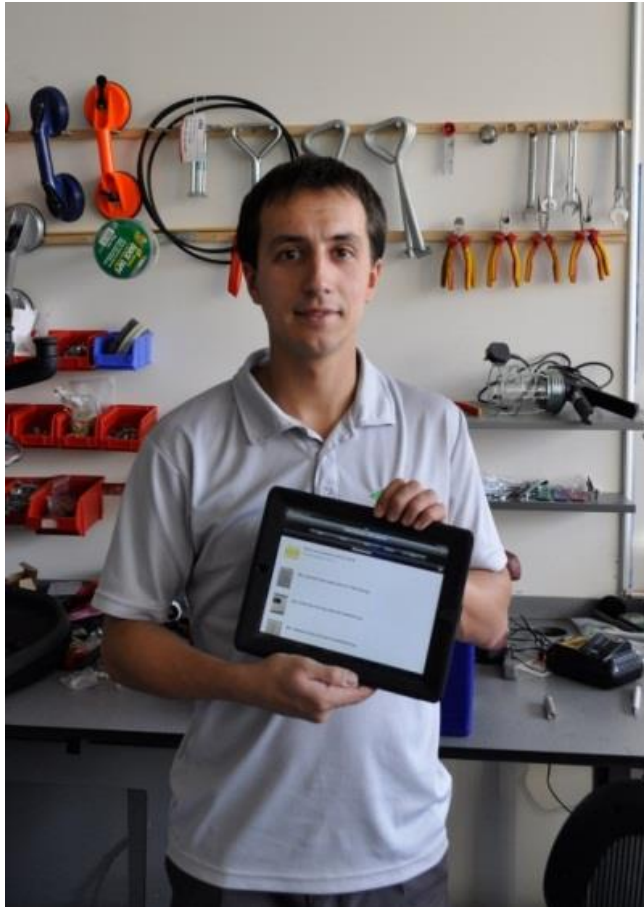
# Project Robin - Method



- Room or Asset listing to model or model to Room or Asset listing
- Navigational Views and hiding of Objects or separated Models  
Provides full facility to get to the equipment data for FM purposes and examine the data and attachments
- ALL information available as required to FM Engineers – Anywhere via. mobile Applications – increased productivity

# Project Robin - Results: Staff User Experience

## Technician Response



### Mihails Sedcenkovs

- «The Introduction of the iPads have brought about efficiencies from our traditional way of working.»
- «BIM 360 enables us to scale back walls to reveal pipework, assisting with investigation of faults.»
- «Ability to organise our workload, dealing with tasks in similar areas of the building.»

# Project Robin - Results: Staff User Experience

## Engineer Response



### Dean Dixon

- «The ability to interrogate issues whilst off site has been excellent.»
- «The ability to view issues, visualise the asset and retrieve information such as Model / Serial Number whilst being off site has enabled engineers to come to site with the knowledge of what is required to rectify the job.»

# Project Robin - Demonstration

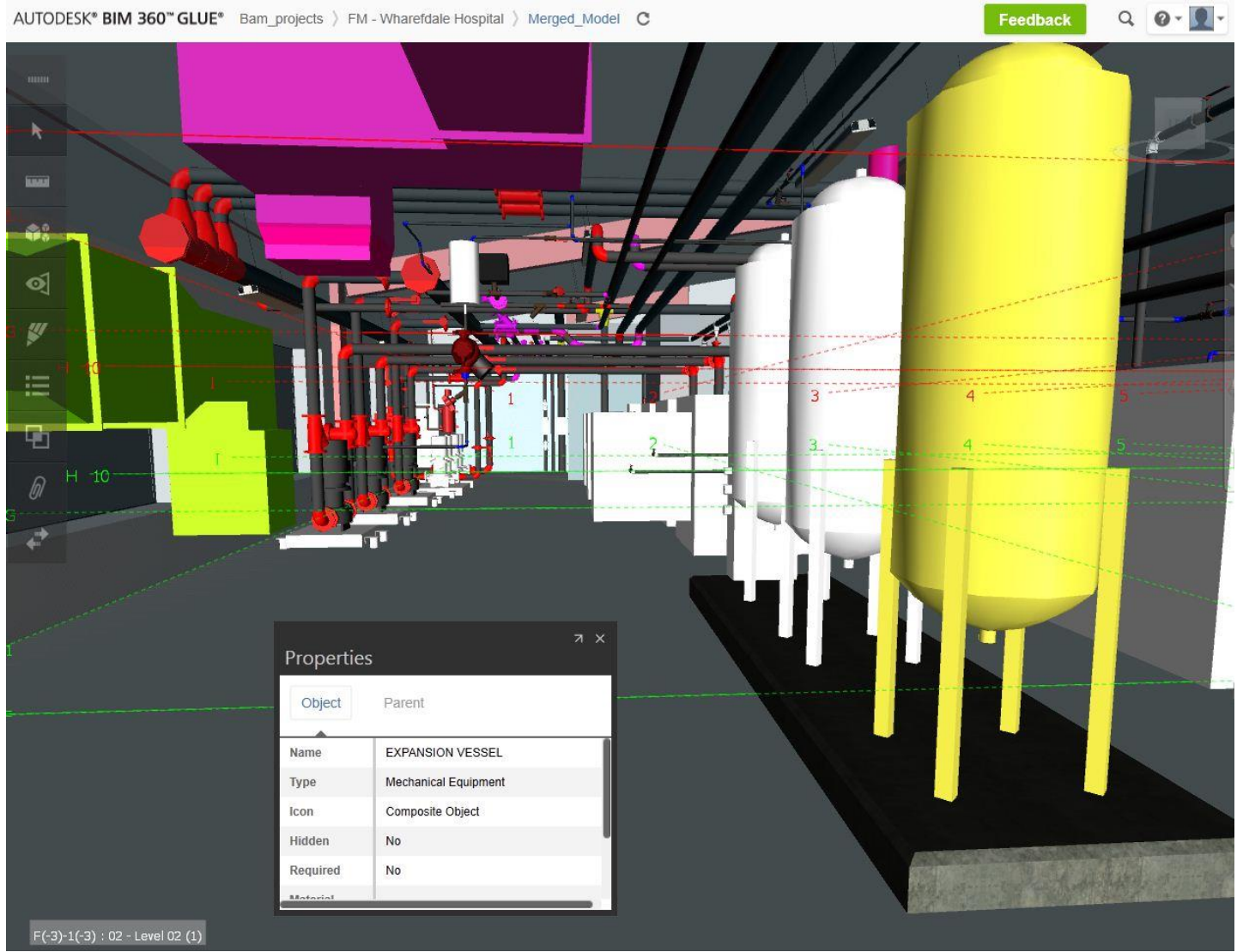
SPOT LIGHT

# BIM LIVE

# «Retro-BIM»

## Wharfedale Hospital

SPOT LIGHT

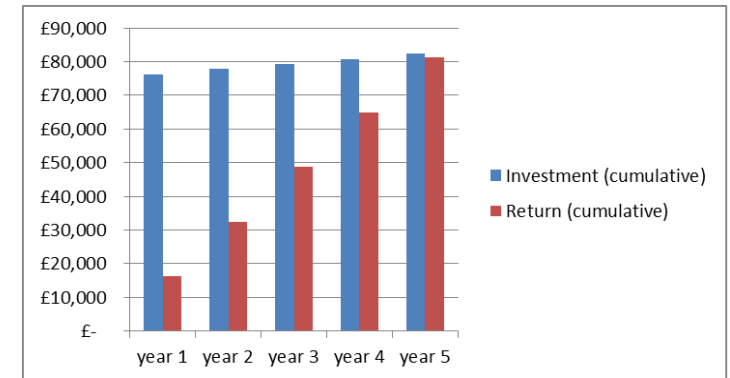




# «BIM for FM» - Business Case / ROI

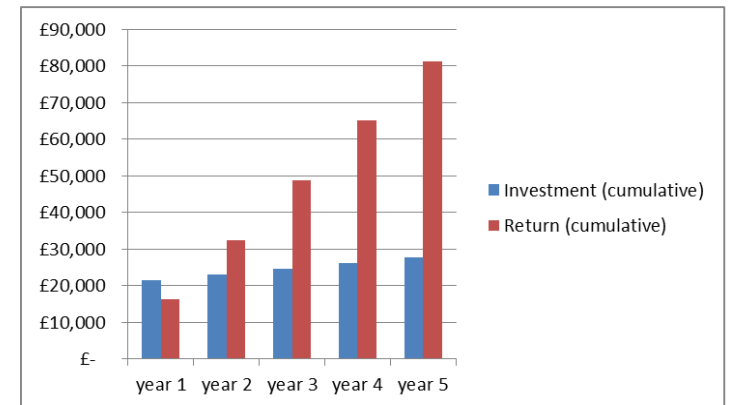
## Project Robin

- Pioneering investment for existing facility
- ROI achieved within c5 years



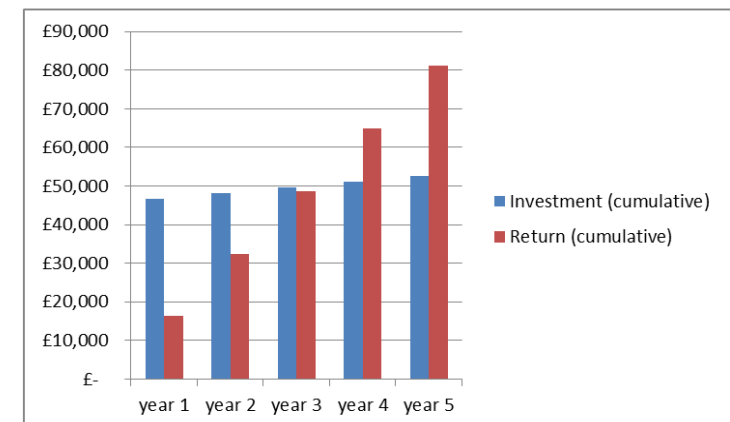
## Future BIM Implementation «Green Site»

- Collaboration in BIM and 3D
- ROI achieved within c2 years (on like for like basis)
- Further client benefits in data



## «Retro-BIM»

- Light BIM point cloud survey and 'representative' BIM
- ROI achieved within c3 years (on like for like basis)
- Further client benefits in data



## BAM's «BIM for FM» Future

- Operate BIM implementation from early D&B stages with view to BIM for FM
- Implement GSL and FM feedback to design team
- Incorporate 'live' data from BMS and AMR to mobile devices
- Implement (back to the future) BIM in existing facilities during 2014
- BIM to underpin “Asset Information Model”



# «BIM for FM» - Benefits and Challenges

SPOTLIGHT

## Challenges to FM

- Joining the design and construction stages
  - Keeping the BIM model up to date
    - The existing estate
  - Contractual link and POE

## Benefits to FM

- 3D BIM Model visualisation and future planning
- Design impact on whole life cost
- Collaboration and engagement of FM
- Tender accuracy

**Thank you for your attention.**

Reid Cunningham

BAM FM Ltd

Breakspear Park, Breakspear Way, Hemel Hempstead, Hertfordshire, HP2 4UL

Kelvin House, Buchanan Gate Business Park, Stepps, Glasgow, G33 6FB

[www.bam.co.uk](http://www.bam.co.uk)